



Stillwater Village

From the \$220's
Cypress, TX 77429
Phone: (713)898-9722
Fax: (281)646-0312

Sales office hours:
By Appointment Only



Cyndi Kornegay

Driving Directions
MODEL IS CLOSED
PLEASE CALL TO SCHEDULE AN
APPOINTMENT

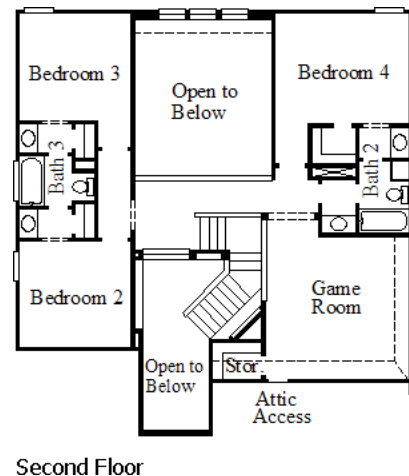
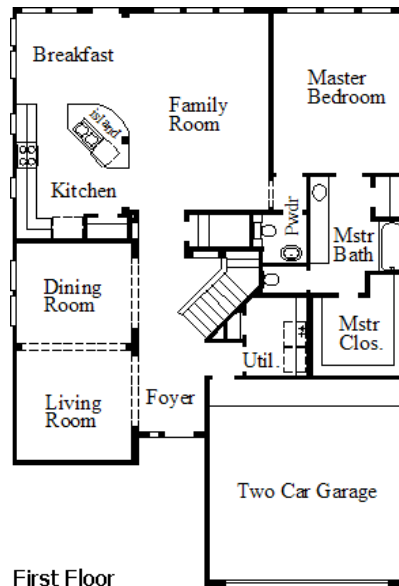
From US 290 West:
Right on Telge Rd.,
Right on Baileys Crossing Drive

Address: 14302 Prosper Ridge Dr
Cypress, TX 77429
Plan: 5350 A / Worthington IV
MLS#: 72721863
Ref#: H6K012

~Sq. Ft.: 2824
Stories: 2.0
Bedrooms: 4
Master: Down
Baths (f/h): 3/1
Garage: 2.0
Price: \$286,742

Highlights

Drive up to a wooded homesite with a backdrop of large hardwoods. This beautiful home has a grand two story entrance with unique art niches and design. The large island kitchen overlooks the sun room and is a cook's dream with stainless steel appliances and granite countertops. One of our last new homes left in Stillwater Village...a must see.



Disclaimers, Terms and Conditions of Use.

Plans, specifications, community amenities, standard features, availability and prices are subject to change without notice. Calculations for square footage of these plans were made from exterior dimensions less attached garage, if appropriate. A/C square footage is the same area less thickness of exterior walls of the same area. Square footage calculations are made based on plan dimensions only and may vary from finished square footage of the home as built. The accuracy of property tax rates, homeowners' association fees, and school district information displayed on this web site is not guaranteed by MHI or any affiliated companies. This information has been provided by third parties and is subject to change without notice. It is recommended that you ascertain the correct property tax rates, homeowners' association fees, and school district information from the appropriate authorities before you make a decision to purchase. © 2006 - 2012 Plantation Homes, All Rights Reserved. 5/24/2012