



Northwest Park Colony

From the \$120's

12650 Ginger Cove Lane

Houston, TX 77086

Phone: (281)847-5215

Fax: (281)847-4274

Sales office hours:

Tues - Sat: 10 am - 7 pm

Sun - Mon: Noon - 7 pm



Eric Spataro
Spanish

Driving Directions

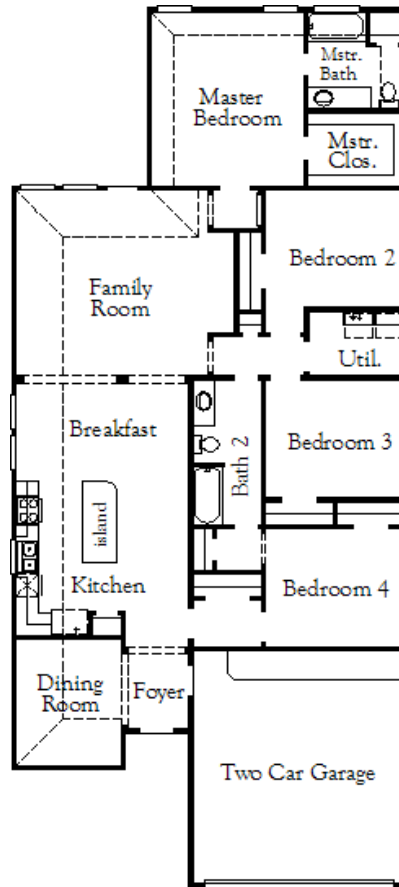
From Beltway 8:

Head South on SH 249,
Right on Smiling Wood Ln.,
Left on Park Colony Point Lane,
Left on Mimosa View Ln.,
Right on Ginger Cove Ln.

~Sq. Ft.: 1845
Stories: 1.0
Bedrooms: 4
Master: Down

Baths (f/h): 2/0
Garage: 2.0
Price: \$144,990

4817 / Kendelton



Available Elevations



Elevation A



Elevation B



Disclaimers, Terms and Conditions of Use.

Plans, specifications, community amenities, standard features, availability and prices are subject to change without notice. Calculations for square footage of these plans were made from exterior dimensions less attached garage, if appropriate. A/C square footage is the same area less thickness of exterior walls of the same area. Square footage calculations are made based on plan dimensions only and may vary from finished square footage of the home as built. The accuracy of property tax rates, homeowners' association fees, and school district information displayed on this web site is not guaranteed by MHI or any affiliated companies. This information has been provided by third parties and is subject to change without notice. It is recommended that you ascertain the correct property tax rates, homeowners' association fees, and school district information from the appropriate authorities before you make a decision to purchase. © 2006 - 2012 Plantation Homes, All Rights Reserved. 5/23/2012



Elevation C



Elevation D



Elevation E



Elevation F

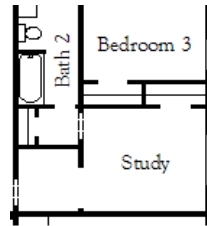


Elevation G

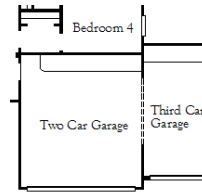


Elevation H

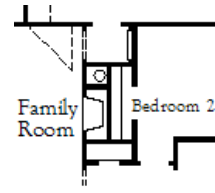
Available Options



Optional Study
(# 005)



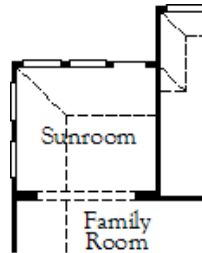
Optional Third Car Garage
(# 045)



Optional Fireplace
(# 054)



Optional Separate Shower
(# 079)



Optional Sunroom
(# 107)

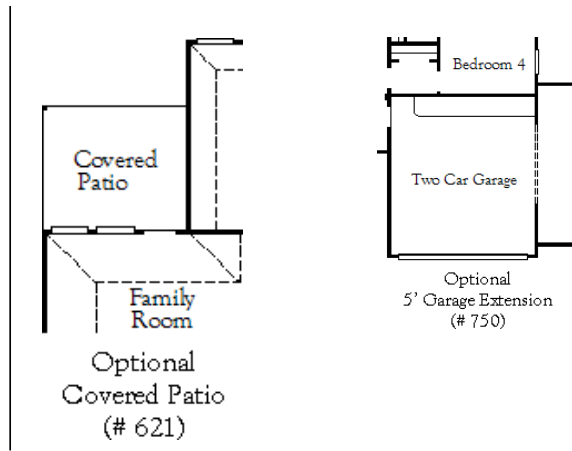


Optional Playroom
(# 309)



Disclaimers, Terms and Conditions of Use.

Plans, specifications, community amenities, standard features, availability and prices are subject to change without notice. Calculations for square footage of these plans were made from exterior dimensions less attached garage, if appropriate. A/C square footage is the same area less thickness of exterior walls of the same area. Square footage calculations are made based on plan dimensions only and may vary from finished square footage of the home as built. The accuracy of property tax rates, homeowners' association fees, and school district information displayed on this web site is not guaranteed by MHI or any affiliated companies. This information has been provided by third parties and is subject to change without notice. It is recommended that you ascertain the correct property tax rates, homeowners' association fees, and school district information from the appropriate authorities before you make a decision to purchase. © 2006 - 2012 Plantation Homes, All Rights Reserved. 5/23/2012



Disclaimers, Terms and Conditions of Use.

Plans, specifications, community amenities, standard features, availability and prices are subject to change without notice. Calculations for square footage of these plans were made from exterior dimensions less attached garage, if appropriate. A/C square footage is the same area less thickness of exterior walls of the same area. Square footage calculations are made based on plan dimensions only and may vary from finished square footage of the home as built. The accuracy of property tax rates, homeowners' association fees, and school district information displayed on this web site is not guaranteed by MHI or any affiliated companies. This information has been provided by third parties and is subject to change without notice. It is recommended that you ascertain the correct property tax rates, homeowners' association fees, and school district information from the appropriate authorities before you make a decision to purchase. © 2006 - 2012 Plantation Homes, All Rights Reserved. 5/23/2012