



Northwest Park Colony

From the \$120's

12650 Ginger Cove Lane

Houston, TX 77086

Phone: (281)847-5215

Fax: (281)847-4274

Sales office hours:

Tues - Sat: 10 am - 7 pm

Sun - Mon: Noon - 7 pm



Eric Spataro

Spanish

Driving Directions

From Beltway 8:

Head South on SH 249,

Right on Smiling Wood Ln.,

Left on Park Colony Point Lane,

Left on Mimosa View Ln.,

Right on Ginger Cove Ln.

Address: 12638 Atwood Grove Ln
Houston, TX 77086
Plan: 4826 A / Woodbranch II
MLS#: 90036776
Ref#: H7J177

~Sq. Ft.: 2592
Stories: 2.0
Bedrooms: 4
Master: Down
Baths (f/h): 2/1
Garage: 2.0
Price: \$198,229
Special: **\$178,990 You Save \$19K!**

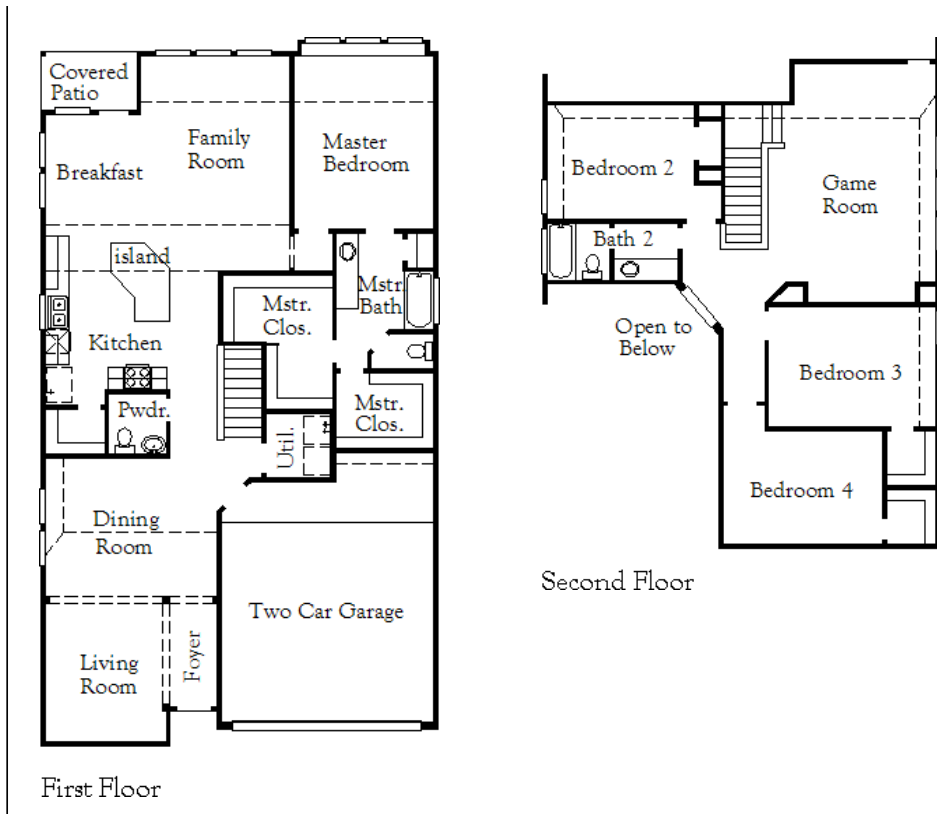
Highlights

The open concept design in this home is perfect for entertaining! Columns and design arches separate the living and dining rooms. The island kitchen features recessed can lights, ceramic tile flooring, a ceramic tile backsplash, oversized maple 42" adjustable cabinetry, a wine rack over the refrigerator and granite countertops, and the breakfast area connects to the spacious family room. The master suite allows privacy from the secondary bedrooms and includes two generous walk-in closets. A garden tub, a separate shower and an oversized glass window add luxury to the master bath. Other features include upgraded stainless steel appliances and a beautiful upgraded wood spindles staircase.



Disclaimers, Terms and Conditions of Use.

Plans, specifications, community amenities, standard features, availability and prices are subject to change without notice. Calculations for square footage of these plans were made from exterior dimensions less attached garage, if appropriate. A/C square footage is the same area less thickness of exterior walls of the same area. Square footage calculations are made based on plan dimensions only and may vary from finished square footage of the home as built. The accuracy of property tax rates, homeowners' association fees, and school district information displayed on this web site is not guaranteed by MHI or any affiliated companies. This information has been provided by third parties and is subject to change without notice. It is recommended that you ascertain the correct property tax rates, homeowners' association fees, and school district information from the appropriate authorities before you make a decision to purchase. © 2006 - 2012 Plantation Homes, All Rights Reserved. 5/23/2012



First Floor

Second Floor



Disclaimers, Terms and Conditions of Use.

Plans, specifications, community amenities, standard features, availability and prices are subject to change without notice. Calculations for square footage of these plans were made from exterior dimensions less attached garage, if appropriate. A/C square footage is the same area less thickness of exterior walls of the same area. Square footage calculations are made based on plan dimensions only and may vary from finished square footage of the home as built. The accuracy of property tax rates, homeowners' association fees, and school district information displayed on this web site is not guaranteed by MHI or any affiliated companies. This information has been provided by third parties and is subject to change without notice. It is recommended that you ascertain the correct property tax rates, homeowners' association fees, and school district information from the appropriate authorities before you make a decision to purchase. © 2006 - 2012 Plantation Homes, All Rights Reserved. 5/23/2012