



Lake at Golfcrest

From the \$190's

2510 Hook Left Drive

Houston, TX 77089

Phone: (281)485-5958

Fax: (281)485-1674

Sales office hours:

Tues - Sat: 10 am - 7 pm

Sun - Mon: Noon - 7 pm



Elke Perry



Tania Litvin
Ukrainian, Russian

Driving Directions

From Highway 288 South:

Left on Beltway 8, Exit Blackhawk and turn right, Pass Hughes Rd. at stop sign, Turn right on Hughes Ranch Rd.

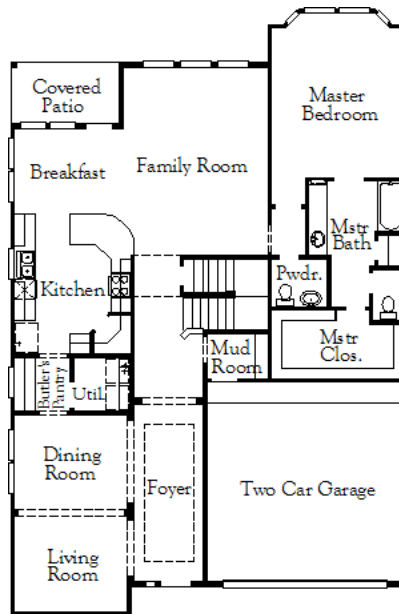
From 1-45 South:

Exit Beltway 8 West, Exit Blackhawk and turn left, Pass Hughes Rd. at stop sign, Turn right on Hughes Ranch Rd.

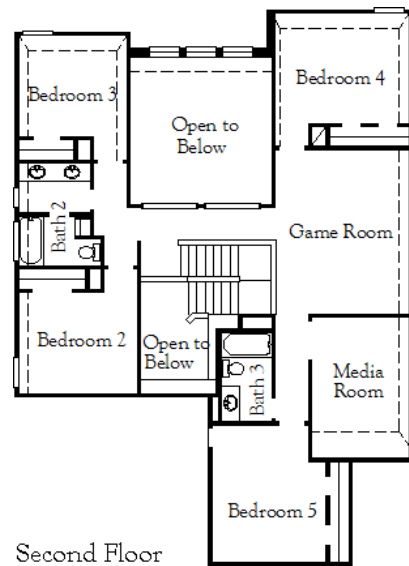
~Sq. Ft.: 3072
 Stories: 2.0
 Bedrooms: 5
 Master: Down

Baths (f/h): 3/1
 Garage: 2.0
 Price: \$260,990

5385 / Delfina IV



First Floor



Second Floor

Available Elevations



Elevation A



Elevation B



Elevation C

Available Options

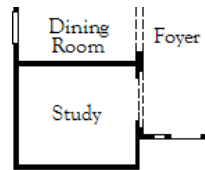


Disclaimers, Terms and Conditions of Use.

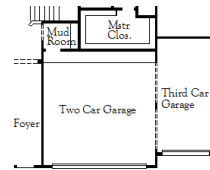
Plans, specifications, community amenities, standard features, availability and prices are subject to change without notice. Calculations for square footage of these plans were made from exterior dimensions less attached garage, if appropriate. A/C square footage is the same area less thickness of exterior walls of the same area. Square footage calculations are made based on plan dimensions only and may vary from finished square footage of the home as built. The accuracy of property tax rates, homeowners' association fees, and school district information displayed on this web site is not guaranteed by MHI or any affiliated companies. This information has been provided by third parties and is subject to change without notice. It is recommended that you ascertain the correct property tax rates, homeowners' association fees, and school district information from the appropriate authorities before you make a decision to purchase. © 2006 - 2012 Plantation Homes, All Rights Reserved. 5/23/2012



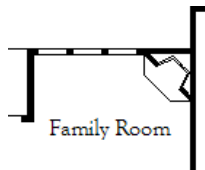
Optional
Bedroom 6
(# 004)



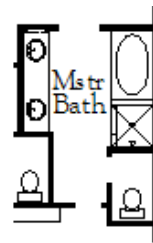
Optional
Study
(# 005)



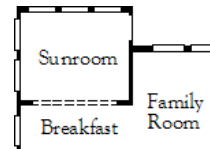
Optional
Third Car Garage
(# 045)



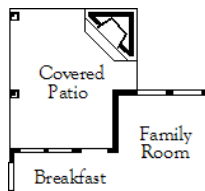
Optional
Fireplace
(# 054)



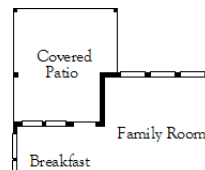
Optional
Separate Shower
(# 079)



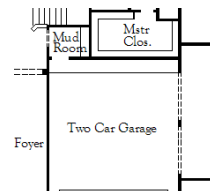
Optional
Sunroom
(# 107)



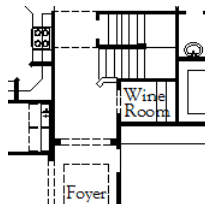
Optional
Outdoor Fireplace
(# 498)



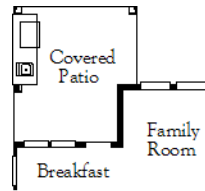
Optional
Covered Patio
(# 621)



Optional
5' Garage Extension
(# 750)



Optional
Wine Room
(# 776)



Optional
Outdoor Kitchen
(# 970)



Disclaimers, Terms and Conditions of Use.

Plans, specifications, community amenities, standard features, availability and prices are subject to change without notice. Calculations for square footage of these plans were made from exterior dimensions less attached garage, if appropriate. A/C square footage is the same area less thickness of exterior walls of the same area. Square footage calculations are made based on plan dimensions only and may vary from finished square footage of the home as built. The accuracy of property tax rates, homeowners' association fees, and school district information displayed on this web site is not guaranteed by MHI or any affiliated companies. This information has been provided by third parties and is subject to change without notice. It is recommended that you ascertain the correct property tax rates, homeowners' association fees, and school district information from the appropriate authorities before you make a decision to purchase. © 2006 - 2012 Plantation Homes, All Rights Reserved. 5/23/2012