



## Imperial Oaks

### The Meadows at Imperial Oaks

From the \$130's

Conroe, TX 77385

Phone: (281)296-0452

Fax: (281)362-0866

#### Sales office hours:

**Coventry Homes in  
Imperial Lakes:**

2303 Spring Lake Park Ln,  
Spring, TX 77386

#### Driving Directions

**MODEL HOME IS CLOSED.  
PLEASE VISIT OUR  
COVENTRY MODEL HOME  
IN IMPERIAL LAKES  
FOR MORE INFORMATION.**

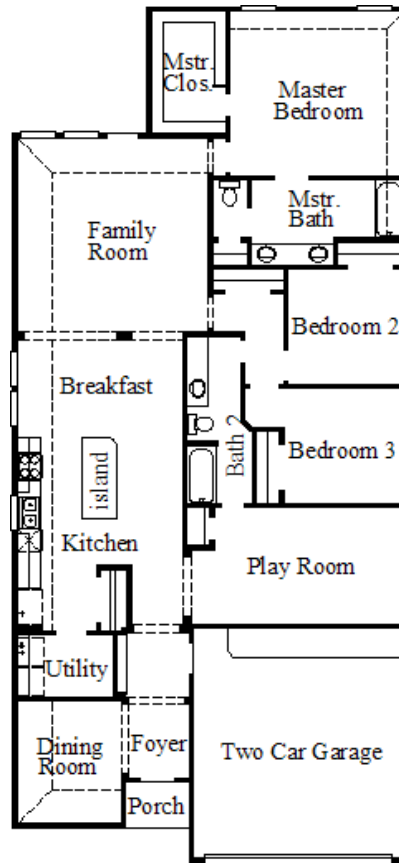
#### From I-45 North:

Right on Rayford Rd.,  
Left on Imperial Oaks Blvd.,  
Right on Northridge Forest Drive,  
Right on Imperial View Lane,  
Right on Spring Lake Park Ln.

~Sq. Ft.: 1950  
Stories: 1.0  
Bedrooms: 3  
Master: Down

Baths (f/h): 2/0  
Garage: 2.0  
Price: \$167,990

## 4827 / Kendelton II



### Available Elevations



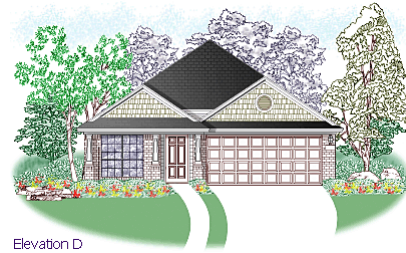
Elevation A



Elevation B



Elevation C



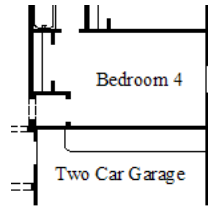
Elevation D



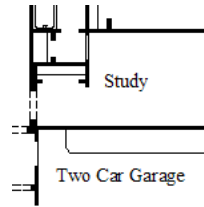
#### Disclaimers, Terms and Conditions of Use.

Plans, specifications, community amenities, standard features, availability and prices are subject to change without notice. Calculations for square footage of these plans were made from exterior dimensions less attached garage, if appropriate. A/C square footage is the same area less thickness of exterior walls of the same area. Square footage calculations are made based on plan dimensions only and may vary from finished square footage of the home as built. The accuracy of property tax rates, homeowners' association fees, and school district information displayed on this web site is not guaranteed by MHI or any affiliated companies. This information has been provided by third parties and is subject to change without notice. It is recommended that you ascertain the correct property tax rates, homeowners' association fees, and school district information from the appropriate authorities before you make a decision to purchase. © 2006 - 2012 Plantation Homes, All Rights Reserved. 2/7/2012

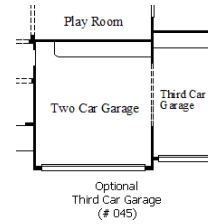
## Available Options



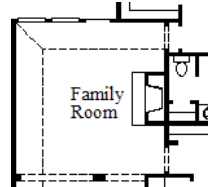
Optional  
Bedroom 4  
(# 002)



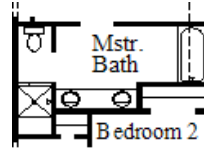
Optional  
Study  
(# 005)



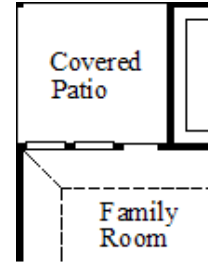
Optional  
Third Car Garage  
(# 045)



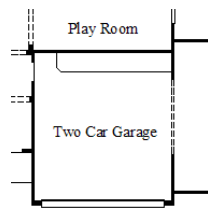
Optional  
Fireplace  
(# 054)



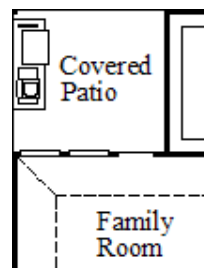
Optional Shower  
at Master Bath  
(# 079)



Optional  
Covered Patio  
(# 621)



Optional  
5' Garage Extension  
(# 750)



Optional  
Outdoor Kitchen  
(# 970)



### Disclaimers, Terms and Conditions of Use.

Plans, specifications, community amenities, standard features, availability and prices are subject to change without notice. Calculations for square footage of these plans were made from exterior dimensions less attached garage, if appropriate. A/C square footage is the same area less thickness of exterior walls of the same area. Square footage calculations are made based on plan dimensions only and may vary from finished square footage of the home as built. The accuracy of property tax rates, homeowners' association fees, and school district information displayed on this web site is not guaranteed by MHI or any affiliated companies. This information has been provided by third parties and is subject to change without notice. It is recommended that you ascertain the correct property tax rates, homeowners' association fees, and school district information from the appropriate authorities before you make a decision to purchase. © 2006 - 2012 Plantation Homes, All Rights Reserved. 2/7/2012