



Fall Creek

Lake Point

From the \$170's

14823 Eagle Shore Tr
Humble, TX 77396

Phone: (281)883-4976

Fax: (281)913-5726

Sales office hours:

Tues - Sat: 9 am - 6 pm

Sun - Mon: Noon - 6 pm



Kevin Jackson



Bobby Sharp



Natalie Keltsch

Driving Directions

From US-59 North:

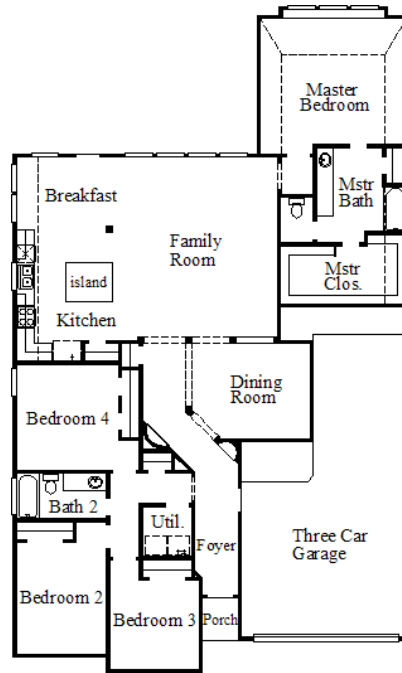
East on Beltway 8,

Right on Fall Creek View Dr.

~Sq. Ft.: 2110
Stories: 1.0
Bedrooms: 4
Master: Down

Baths (f/h): 2/0
Garage: 3.0
Price: \$209,990

5948 / Weatherford



Available Elevations



Elevation A



Elevation B



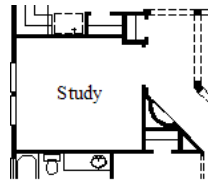
Elevation C

Available Options

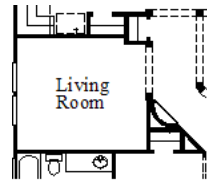


Disclaimers, Terms and Conditions of Use.

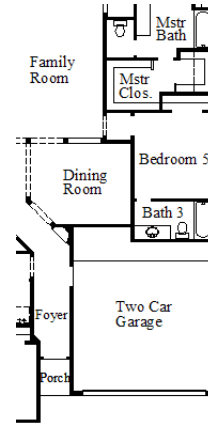
Plans, specifications, community amenities, standard features, availability and prices are subject to change without notice. Calculations for square footage of these plans were made from exterior dimensions less attached garage, if appropriate. A/C square footage is the same area less thickness of exterior walls of the same area. Square footage calculations are made based on plan dimensions only and may vary from finished square footage of the home as built. The accuracy of property tax rates, homeowners' association fees, and school district information displayed on this web site is not guaranteed by MHI or any affiliated companies. This information has been provided by third parties and is subject to change without notice. It is recommended that you ascertain the correct property tax rates, homeowners' association fees, and school district information from the appropriate authorities before you make a decision to purchase. © 2006 - 2012 Plantation Homes, All Rights Reserved. 2/4/2012



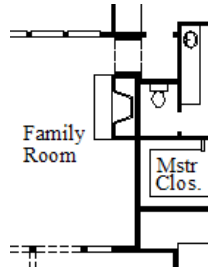
Optional Study (# 005)



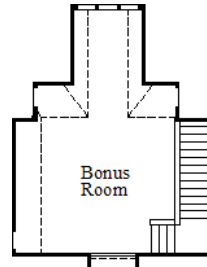
Optional Living Room (# 043)



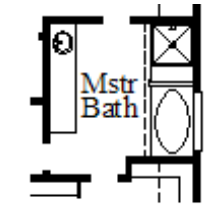
Optional Bedroom 5 with Bath 3 (# 046)



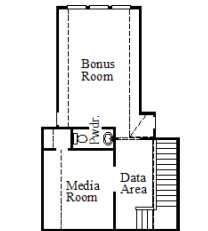
Optional Fireplace (# 054)



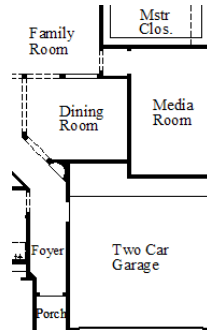
Optional Bonus Room (# 075)



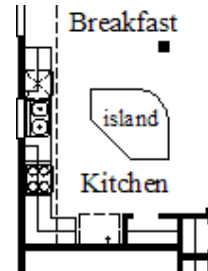
Optional Separate Shower (# 079)



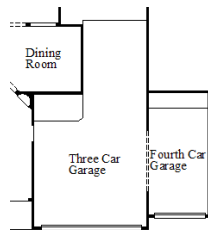
Optional Bonus Room with Media Room, Data Room and Powder Room (# 1614)



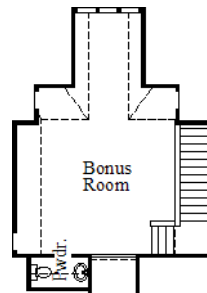
Optional Media Room (# 276)



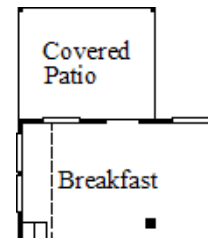
Optional Island (# 281)



Optional Fourth Car Garage (# 441)



Optional Bonus Room with Powder Room (# 573)

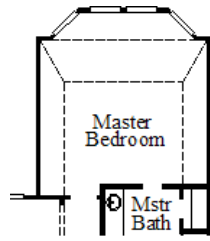


Optional Covered Patio (# 621)

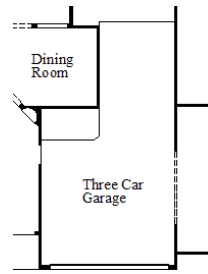


Disclaimers, Terms and Conditions of Use.

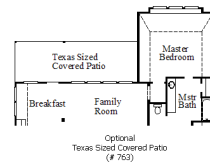
Plans, specifications, community amenities, standard features, availability and prices are subject to change without notice. Calculations for square footage of these plans were made from exterior dimensions less attached garage, if appropriate. A/C square footage is the same area less thickness of exterior walls of the same area. Square footage calculations are made based on plan dimensions only and may vary from finished square footage of the home as built. The accuracy of property tax rates, homeowners' association fees, and school district information displayed on this web site is not guaranteed by MHI or any affiliated companies. This information has been provided by third parties and is subject to change without notice. It is recommended that you ascertain the correct property tax rates, homeowners' association fees, and school district information from the appropriate authorities before you make a decision to purchase. © 2006 - 2012 Plantation Homes, All Rights Reserved. 2/4/2012



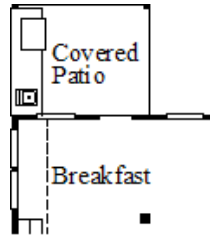
Optional Bay Window
at Master Bedroom
(# 631)



Optional
5' Garage Extension
(# 750)



Optional
Texas Sided Covered Patio
(# 763)



Optional
Outdoor Kitchen
(# 970)



Disclaimers, Terms and Conditions of Use.

Plans, specifications, community amenities, standard features, availability and prices are subject to change without notice. Calculations for square footage of these plans were made from exterior dimensions less attached garage, if appropriate. A/C square footage is the same area less thickness of exterior walls of the same area. Square footage calculations are made based on plan dimensions only and may vary from finished square footage of the home as built. The accuracy of property tax rates, homeowners' association fees, and school district information displayed on this web site is not guaranteed by MHI or any affiliated companies. This information has been provided by third parties and is subject to change without notice. It is recommended that you ascertain the correct property tax rates, homeowners' association fees, and school district information from the appropriate authorities before you make a decision to purchase. © 2006 - 2012 Plantation Homes, All Rights Reserved. 2/4/2012