



Fall Creek

Lake Point

From the \$170's

14823 Eagle Shore Tr

Humble, TX 77396

Phone: (281)883-4976

Fax: (281)913-5726

Sales office hours:

Tues - Sat: 9 am - 6 pm

Sun - Mon: Noon - 6 pm



Kevin Jackson



Bobby Sharp



Natalie Keltsch

Driving Directions

From US-59 North:

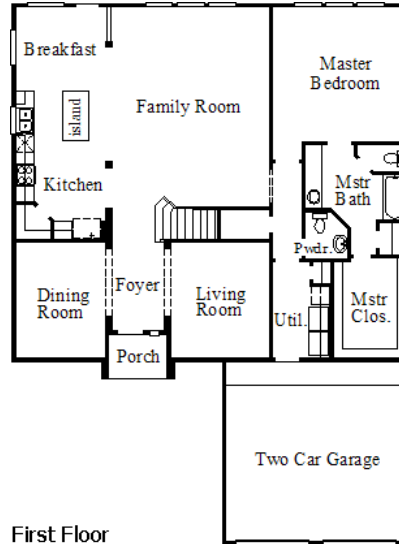
East on Beltway 8,

Right on Fall Creek View Dr.

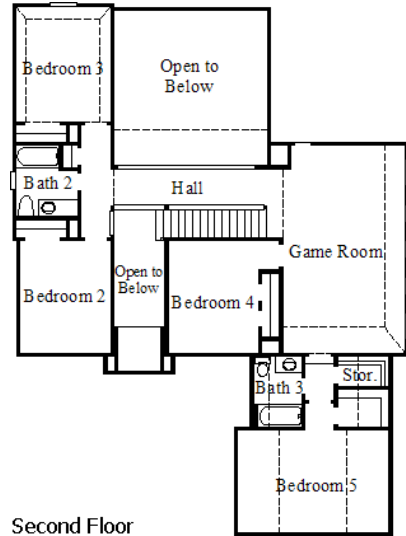
~Sq. Ft.: 3228
 Stories: 2.0
 Bedrooms: 5
 Master: Down

Baths (f/h): 3/1
 Garage: 2.0
 Price: \$247,990

5924 / Lowther IV



First Floor



Second Floor

Available Elevations



Elevation A



Elevation B



Elevation C



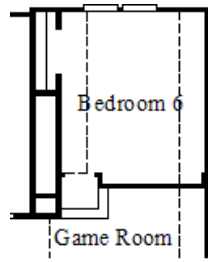
Elevation D

Available Options

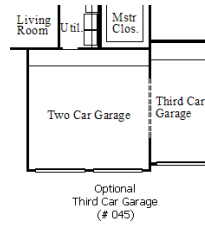


Disclaimers, Terms and Conditions of Use.

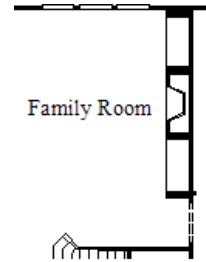
Plans, specifications, community amenities, standard features, availability and prices are subject to change without notice. Calculations for square footage of these plans were made from exterior dimensions less attached garage, if appropriate. A/C square footage is the same area less thickness of exterior walls of the same area. Square footage calculations are made based on plan dimensions only and may vary from finished square footage of the home as built. The accuracy of property tax rates, homeowners' association fees, and school district information displayed on this web site is not guaranteed by MHI or any affiliated companies. This information has been provided by third parties and is subject to change without notice. It is recommended that you ascertain the correct property tax rates, homeowners' association fees, and school district information from the appropriate authorities before you make a decision to purchase. © 2006 - 2012 Plantation Homes, All Rights Reserved. 2/7/2012



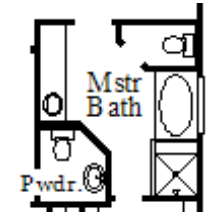
Optional Bedroom 6 (# 004)



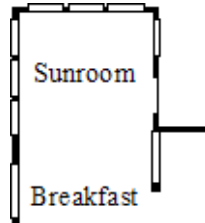
Optional Third Car Garage (# 045)



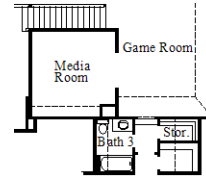
Optional Fireplace (# 054)



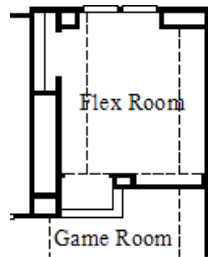
Optional Separate Shower (# 079)



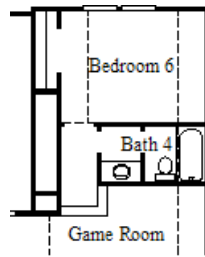
Optional Sunroom (# 107)



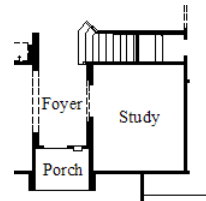
Optional Media Room (# 276)



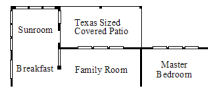
Optional Flex Room (# 302)



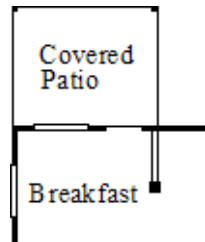
Optional Bedroom 6 with Bath 4 (# 316)



Optional Study (# 571)



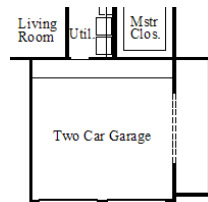
Optional Sunroom with Texas Sized Covered Patio (# 610)



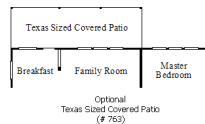
Optional Covered Patio (# 621)



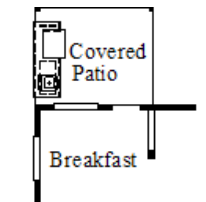
Optional Bay Window at Master Bedroom (# 631)



Optional 5' Garage Extension (# 750)



Optional Texas Sized Covered Patio (# 703)



Optional Covered Patio with Outdoor Kitchen (# 970)



Disclaimers, Terms and Conditions of Use.

Plans, specifications, community amenities, standard features, availability and prices are subject to change without notice. Calculations for square footage of these plans were made from exterior dimensions less attached garage, if appropriate. A/C square footage is the same area less thickness of exterior walls of the same area. Square footage calculations are made based on plan dimensions only and may vary from finished square footage of the home as built. The accuracy of property tax rates, homeowners' association fees, and school district information displayed on this web site is not guaranteed by MHI or any affiliated companies. This information has been provided by third parties and is subject to change without notice. It is recommended that you ascertain the correct property tax rates, homeowners' association fees, and school district information from the appropriate authorities before you make a decision to purchase. © 2006 - 2012 Plantation Homes, All Rights Reserved. 2/7/2012