



Fall Creek

Lake Point

From the \$180's

14823 Fall Creek View Dr.

Humble, TX 77396

Phone: (281)883-4976

Fax: (281)913-5726

Sales office hours:

Tues - Sat: 10 am - 7 pm

Sun - Mon: Noon - 7 pm



Bobby Sharp



Natalie Keltsch



Khriston Sutton

Driving Directions

From US-59 North:

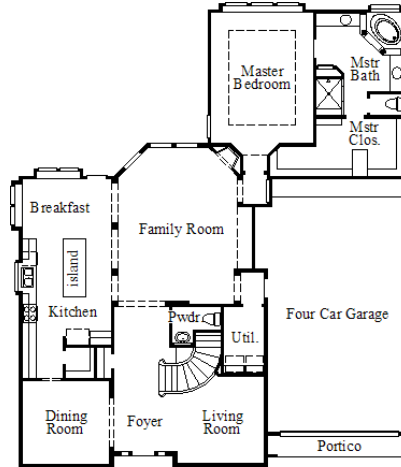
East on Beltway 8,

Right on Fall Creek View Dr.

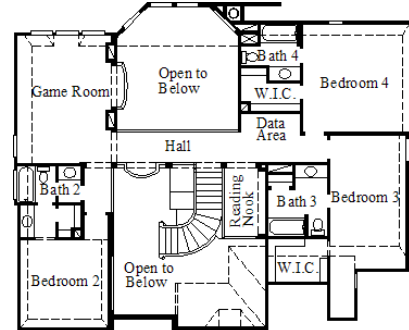
~Sq. Ft.: 3545
 Stories: 2.0
 Bedrooms: 4
 Master: Down

Baths (f/h): 4/1
 Garage: 4.0
 Price: \$304,990

6855 / Centerville



First Floor



Second Floor

Available Elevations



Elevation A



Elevation B



Elevation C



Elevation D



Elevation E



Elevation F



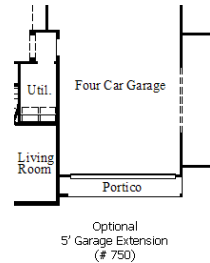
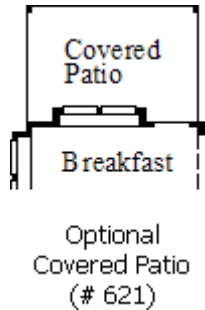
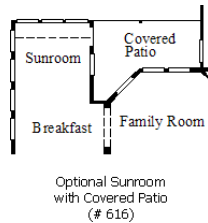
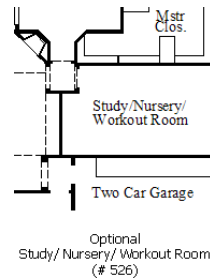
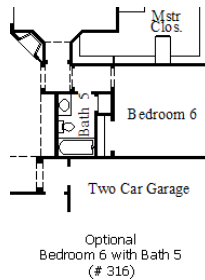
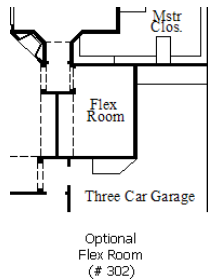
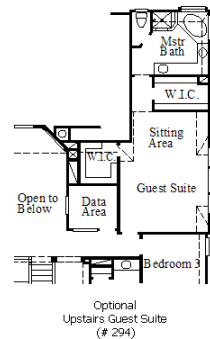
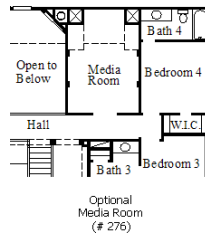
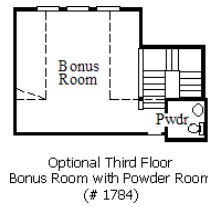
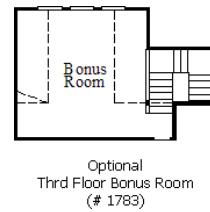
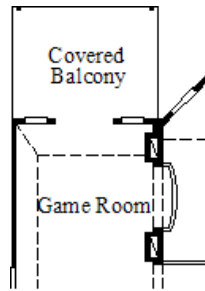
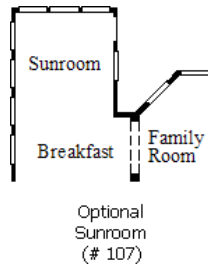
Disclaimers, Terms and Conditions of Use.

Plans, specifications, community amenities, standard features, availability and prices are subject to change without notice. Calculations for square footage of these plans were made from exterior dimensions less attached garage, if appropriate. A/C square footage is the same area less thickness of exterior walls of the same area. Square footage calculations are made based on plan dimensions only and may vary from finished square footage of the home as built. The accuracy of property tax rates, homeowners' association fees, and school district information displayed on this web site is not guaranteed by MHI or any affiliated companies. This information has been provided by third parties and is subject to change without notice. It is recommended that you ascertain the correct property tax rates, homeowners' association fees, and school district information from the appropriate authorities before you make a decision to purchase. © 2006 - 2012 Plantation Homes, All Rights Reserved. 5/17/2012



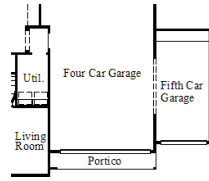
Elevation G

Available Options

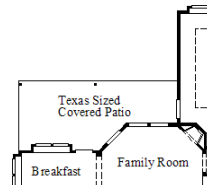


Disclaimers, Terms and Conditions of Use.

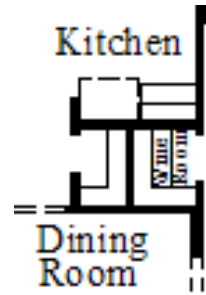
Plans, specifications, community amenities, standard features, availability and prices are subject to change without notice. Calculations for square footage of these plans were made from exterior dimensions less attached garage, if appropriate. A/C square footage is the same area less thickness of exterior walls of the same area. Square footage calculations are made based on plan dimensions only and may vary from finished square footage of the home as built. The accuracy of property tax rates, homeowners' association fees, and school district information displayed on this web site is not guaranteed by MHI or any affiliated companies. This information has been provided by third parties and is subject to change without notice. It is recommended that you ascertain the correct property tax rates, homeowners' association fees, and school district information from the appropriate authorities before you make a decision to purchase. © 2006 - 2012 Plantation Homes, All Rights Reserved. 5/17/2012



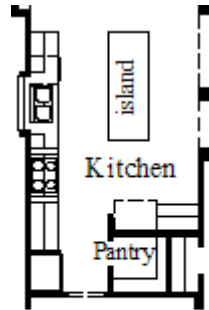
Optional
Fifth Car Garage
(# 757)



Optional
Texas Sized Covered Patio
(# 763)



Optional
Wine Room
(# 776)



Optional
Stone Alcove
(# 833)



Optional
Outdoor Kitchen
(# 970)



Disclaimers, Terms and Conditions of Use.

Plans, specifications, community amenities, standard features, availability and prices are subject to change without notice. Calculations for square footage of these plans were made from exterior dimensions less attached garage, if appropriate. A/C square footage is the same area less thickness of exterior walls of the same area. Square footage calculations are made based on plan dimensions only and may vary from finished square footage of the home as built. The accuracy of property tax rates, homeowners' association fees, and school district information displayed on this web site is not guaranteed by MHI or any affiliated companies. This information has been provided by third parties and is subject to change without notice. It is recommended that you ascertain the correct property tax rates, homeowners' association fees, and school district information from the appropriate authorities before you make a decision to purchase. © 2006 - 2012 Plantation Homes, All Rights Reserved. 5/17/2012